

Pine Island Academy PTO

December 2022



Meeting Minutes

Approve November Minutes

Reminder that minutes &
presentations are on our
website



Just a reminder to VOTE ONLINE TODAY for
Pine Island Academy PTO's Holiday Tree!

<http://www.voteholidaytrees.com>

Voting will begin at 9:00 AM on Monday,
December 12th and will end on December
19th at 11:59 PM. Individuals may vote daily!
The tree with the most votes will win \$1000
for its school. Second place wins \$500 and
Third place wins \$250.

Winners will be announced LIVE on Tuesday,
December 20th on INK!'s Facebook page.
Remember to share this link and encourage
your friends & family to vote!

Thanks for your support!



Treasury Update

(as of 12/7/22)

Money Market \$49,302.27

Checking \$58,423.86

Savings \$5.00

Total \$107,731.13

Summary of revenue and expenditures for
7/1/2022 – 12/7/2022:

Revenue: \$117,980.74

Expenditures: \$55,569.36

Net Revenue: \$62,411.38



Fundraising Updates

MEMBERSHIP

Goal: \$30,000
YTD: \$35,670

BUSINESS PARTNERS

Goal: \$50,000
YTD: \$58,850

APPAREL

Goal: \$8,000
YTD: \$8,232



Membership Update

Magnets, stickers & bags have
been distributed

Diamond 1/4 zips have been
distributed

Yearbooks deadline has passed.
If you haven't filled out
yearbook form already please
do so as soon as possible.

1

Staffulty - 97

2

Bronze 143

3

Silver 65

4

Gold 129

5

Platinum 23

6

Diamond 12



Partners in Education

PLATINUM PARTNERS



GOLD PARTNERS



Partners in Education

SILVER PARTNERS



BRONZE PARTNERS



Fundraising Updates

Spirit Nights

YTD total \$765

tropical
Smoothie
\$222



Pieology
\$469



Jeremiah's
Italian Ice
\$33



trasca
\$46



December Spirit Night

Save-the-Date for our December Spirit Night at Adventure Landing St. Augustine!

Wednesday, December 14th
2:30 - 5:30pm

St. Augustine Adventure Landing
2780 FL-16 St. Augustine, FL 32092

Purchase 3 hours of unlimited Mini-Golf & Go-Karts for \$15 per participant, and Adventure Landing will donate 33% back to Pine Island. Enjoy an afternoon of family fun after Wednesday early release!

★ SAVE-THE-DATE ★
**MINI GOLF &
GO-KARTS**

★  ★
spirit night ★

DEC | ADVENTURE
14 | LANDING
ST. AUGUSTINE

Fundraising Updates - the link



\$309 YTD

19 Families

All Family, Silver, Gold and Platinum members of the link should have your child's school info populated in the membership details section for the link to allocate \$\$ to PIA PTO.

the link is giving 10% of these fees monthly to the PTO along with 10% of program fees of the newly launched after-school enrichment program.

Pending December \$\$\$

the link™
space that inspires

COOKING

WINTER BREAK CAMP
DECEMBER 27TH - 30TH
9:00AM TO 12:00PM

CAMP INCLUDES
Kitchen Skills
Sweets & Treats
NEW YEARS EVE FUN



CHEF CORINA
Age 6 - 12



REGISTER NOW

APP.THELINK.ZONE 904-299-3671

ROBOTHINK the link
Build, Code and Play with Robots learn - play - think - do
FIRST COAST



CODING

WINTER CAMP AT THE LINK
TUES DEC 27 - FRI DEC 30 | 9AM-12PM
— OPEN TO MEMBERS AND NON MEMBERS! —
AGES 8-12



REGISTER TODAY!

SCRATCH VIDEO GAME CODING
RP MAKER VIDEO GAME CODING

Fundraising Updates

AMAZON SMILE

\$1004.31 YTD

115 participants

amazon



How to turn on AmazonSmile in the mobile app

1

Join AmazonSmile by signing up on your web browser. Select ***Pine Island Academy PTO*** to start generating donations, at no cost to you.

2

Get the app.

3

Turn on AmazonSmile in "Settings" in the main menu. Tap "AmazonSmile" and follow the on-screen instructions to turn on AmazonSmile on your phone.

Save the Date Dolphin Dash



K-5 Fun Run - Friday 2/17
MS Color Run - Thursday - 2/16

1/12 TRAINING K-5
2/2 training MS



Does your employer have a Corporate Matching Gift Program? This is a great time to check! Dolphin Dash kicks off in late January! Dolphin Dash is our annual fun run & largest fundraiser of the year.

Corporate matching gifts are a type of philanthropy program in which companies financially match donations their employees make to nonprofit organizations (like PIA PTO). It allows donors like you to maximize the impact of your donation! When an employee makes a donation, they'll request the matching gift from their employer, who then makes their own donation. Companies usually match donations at a 1:1 ratio, but some will match at a 2:1, 3:1, or even a 4:1 ratio. These matching gifts are valuable to our non-profit organization!

Ask your employer today if they have a Corporate Matching Program!

Save the Date Dolphin Dash

Base Goal \$100,000
\$65 per student average

Stretch Goal \$140,000
\$91 per student average

Fund playground shade & gym
floor cover



2022-2023 Capital Enhancement Quotes

1-5 Playground \$38,946

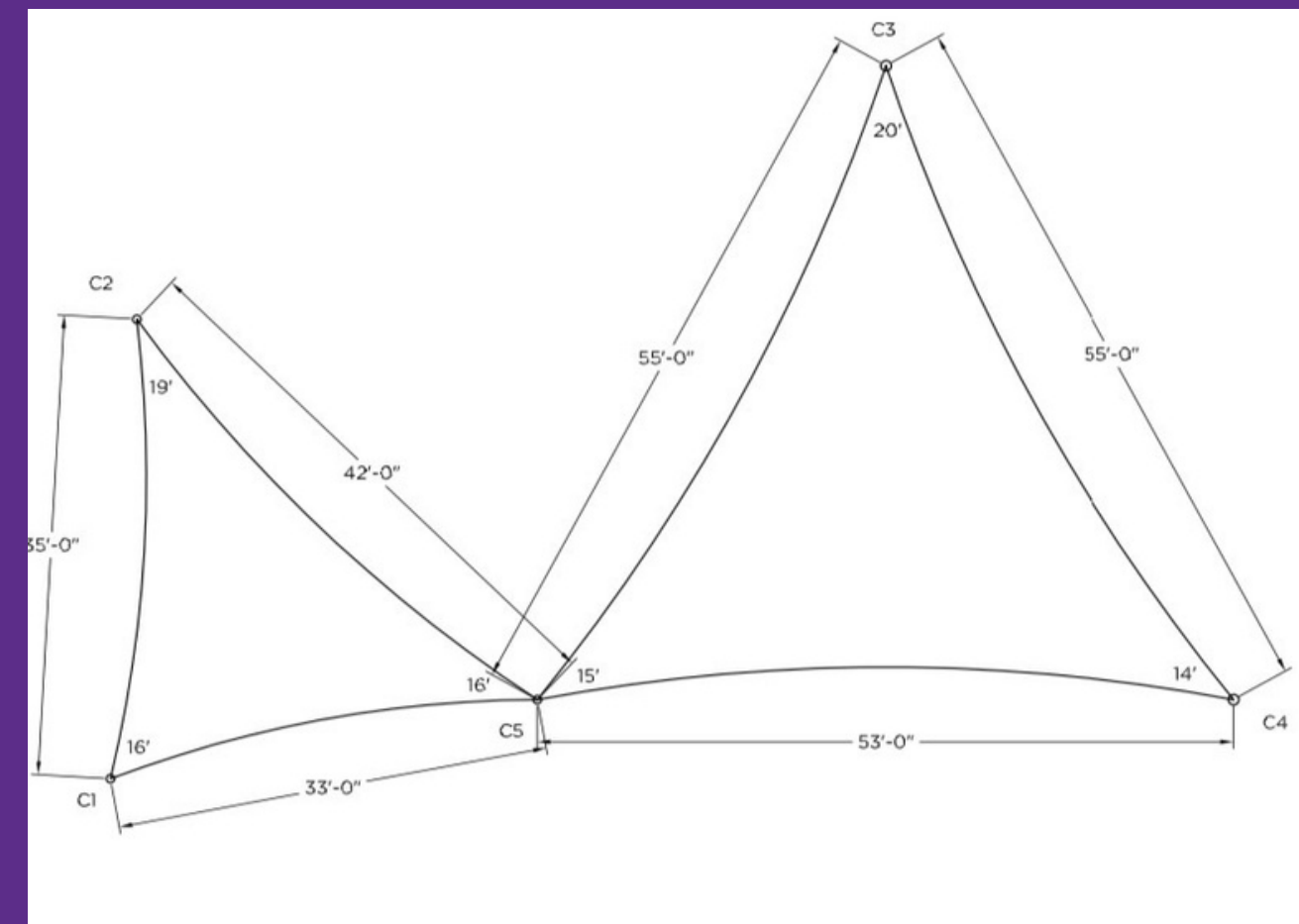
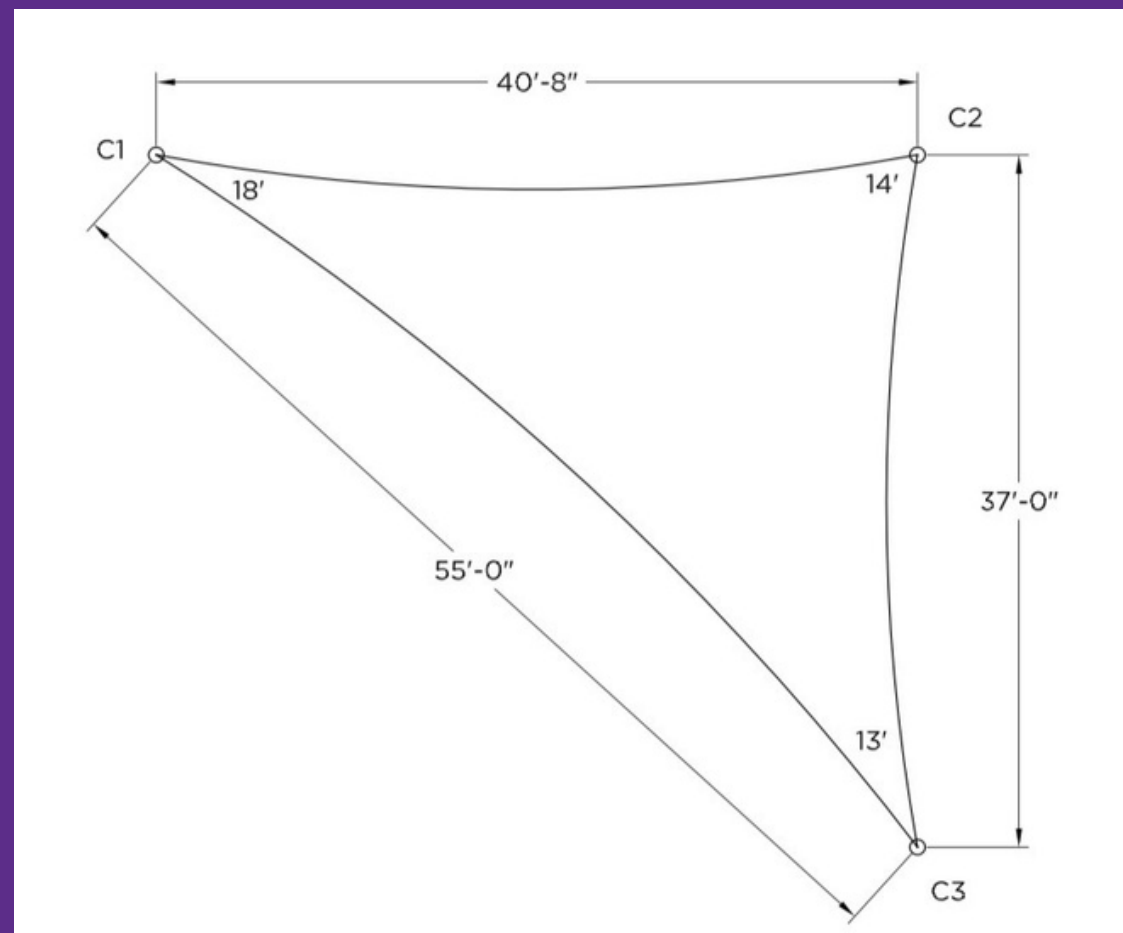
K-2 Playground \$42,233

Gym Floor Cover \$17,683

Total project cost \$98,862

1-5 Playground

K-2 Playground





1

Adult only!

2

at the link

3

Silent Auction

4

Raffle

5

Donations



Community Building

Save-the-Date for Ugly Sweater Parents
Night Out!

December 15th
7:00 - 10:00pm

Join us at RGBS for a parent's night out. Wear
your ugliest Sweater and come meet other Pine
Island Parents.

Please RSVP so we know how many people to
expect!

<https://forms.gle/uVN3Brxf8Xkh1S8i7>

*Parents are responsible for finding their own
childcare. This event is a parents-only event.



Community Building

Interest Survey in Family
News & Facebook

Please complete if you are
interested in participating!

More info coming in
January

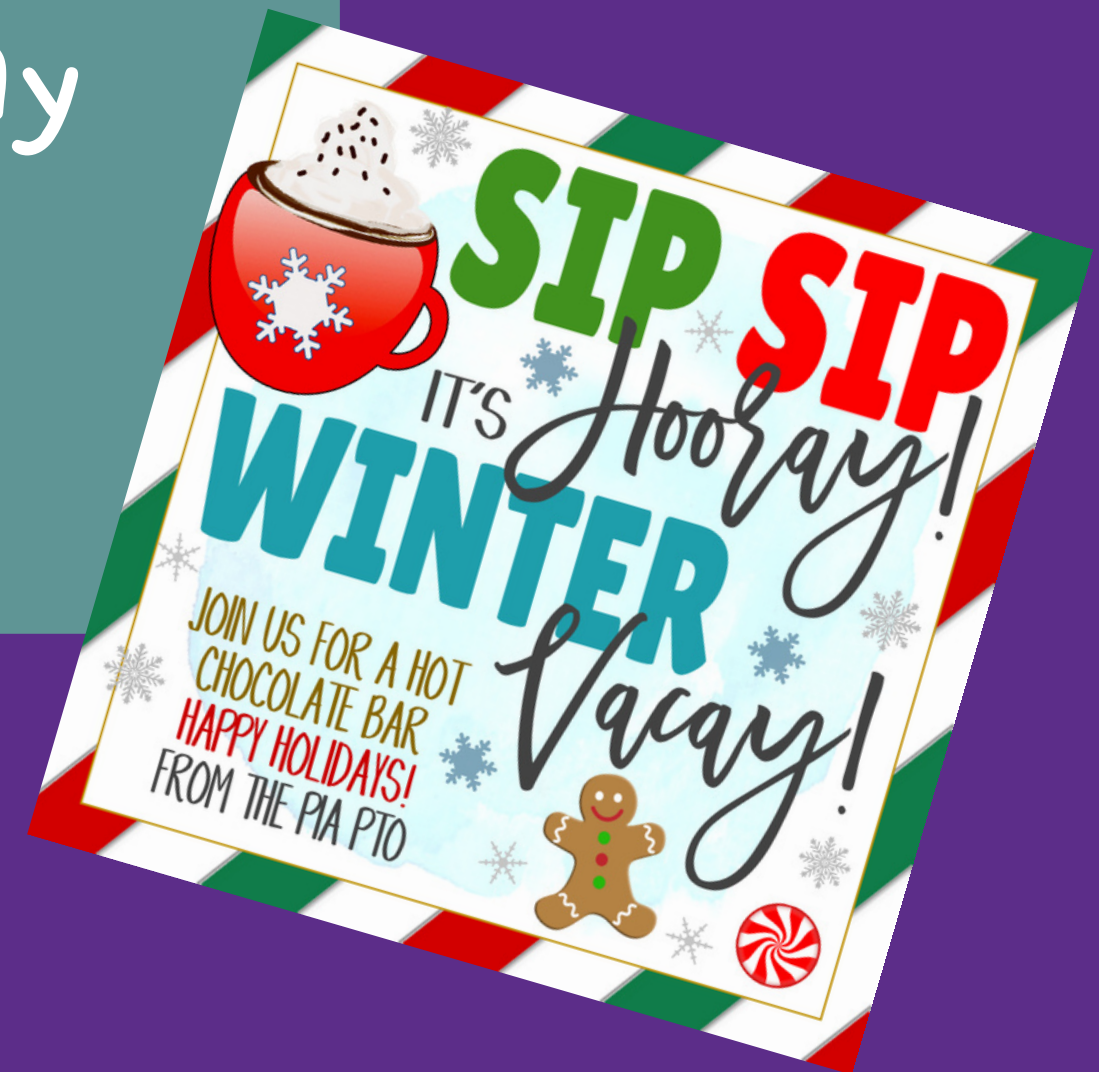


Classroom & Teacher Support

Middle
School
Dolphin of
the Month



takeover
tuesday



Classroom & Teacher Support

Staffulty Holiday Cookie EXchange

DECEMBER 14TH

Sign up now

We are hosting a Holiday Cookie Exchange for our Staffulty and we need your help making cookies.

If you are interested in making 2 dozen cookies please sign up below!

<https://www.signupgenius.com/go/10c0f44aaaf28a3fbc16-staffulty>

Drop off cookies by NOON, Wednesday, December 14th at the Front Office. There will be a table setup for you to leave these on. All cookies must be in DISPOSABLE containers.


****When you drop off cookies - please include a note card with cookie name and ingredients. If you are making vegan or gluten free options - please highlight this on your note card.****

If you want to help but baking isn't your thing - no worries! We are also in need of cookie boxes for the exchange. The link to order these is in the sign up genius link above. We will need these dropped off to the front office by 12/7. You can also ship the cookie containers to the school.

Classroom & Teacher Support

RESOURCE WISHLIST

Our RESOURCES at Pine Island have Wish Lists and would love the help to fulfill them. Our resources benefit so many children in our school. If you're inclined, please feel free to check out their Amazon Wish Lists.

- 
- ☒ Music
 - ☒ PE
 - ☒ Art
 - ☒ STEM
 - ☒ Media
 - ☒ Guidance

Classroom & Teacher Support

K-5 Music Derr

[https://www.amazon.com/hz/wishlist/ls/3FEIOXAUE6V9O?
ref_=wl_share](https://www.amazon.com/hz/wishlist/ls/3FEIOXAUE6V9O?ref_=wl_share)

K-5 PE

[https://www.amazon.com/hz/wishlist/ls/654CID7F2P5I?
ref_=wl_share](https://www.amazon.com/hz/wishlist/ls/654CID7F2P5I?ref_=wl_share)

K-5 Art McKay

[https://www.amazon.com/hz/wishlist/ls/2K990X9N1U12Y/ref=nav_
wishlist_lists_2](https://www.amazon.com/hz/wishlist/ls/2K990X9N1U12Y/ref=nav_wishlist_lists_2)

K-5 Art Simpson

[https://www.amazon.com/hz/wishlist/ls/3JCDCM5VH9K81/?
ref_=lol_ov_le](https://www.amazon.com/hz/wishlist/ls/3JCDCM5VH9K81/?ref_=lol_ov_le)

K-5 Stem Simmer

[https://www.amazon.com/hz/wishlist/ls/34INHKWMS7FZD?
ref_=wl_share](https://www.amazon.com/hz/wishlist/ls/34INHKWMS7FZD?ref_=wl_share)

K-5 Media & Computer Lab

[https://www.amazon.com/hz/wishlist/ls/GAOC8VR58t7C?
ref_=wl_share](https://www.amazon.com/hz/wishlist/ls/GAOC8VR58t7C?ref_=wl_share)

K-5 REACH & Guidance

[https://www.amazon.com/hz/wishlist/ls/35DMOUPSSKJKt?
ref_=wl_share](https://www.amazon.com/hz/wishlist/ls/35DMOUPSSKJKt?ref_=wl_share)

[https://www.amazon.com/hz/wishlist/ls/87Y5SLQMZLD1?
ref_=wl_share](https://www.amazon.com/hz/wishlist/ls/87Y5SLQMZLD1?ref_=wl_share)

[https://www.amazon.com/hz/wishlist/ls/1CG27D91GtAQ3?
ref_=wl_share](https://www.amazon.com/hz/wishlist/ls/1CG27D91GtAQ3?ref_=wl_share)

K-5 SEL/Multicultural

[https://www.amazon.com/hz/wishlist/ls/11L5QZWGtZ6Z0?
ref_=wl_share](https://www.amazon.com/hz/wishlist/ls/11L5QZWGtZ6Z0?ref_=wl_share)



Grants

\$7320/\$7570
Budget Allocated

\$250 remaining

1. Band - individual tuners, larger tuner & Dr. Beat
2. Elementary Art - weaving project
3. ESE - sensory room/supplies
4. Stem - Modeling project
5. Safety Patrol supplies
6. Elementary - Music Books
7. Elementary PE - Giant Connect 4
8. Elementary Art - Clay project
9. Guidance - Fidget Bands
10. Middle School Art - Pottery
11. Time for Kids - 3rd Grade
12. Headphones - Computer lab

Middle School updates

Middle
School
Apparel



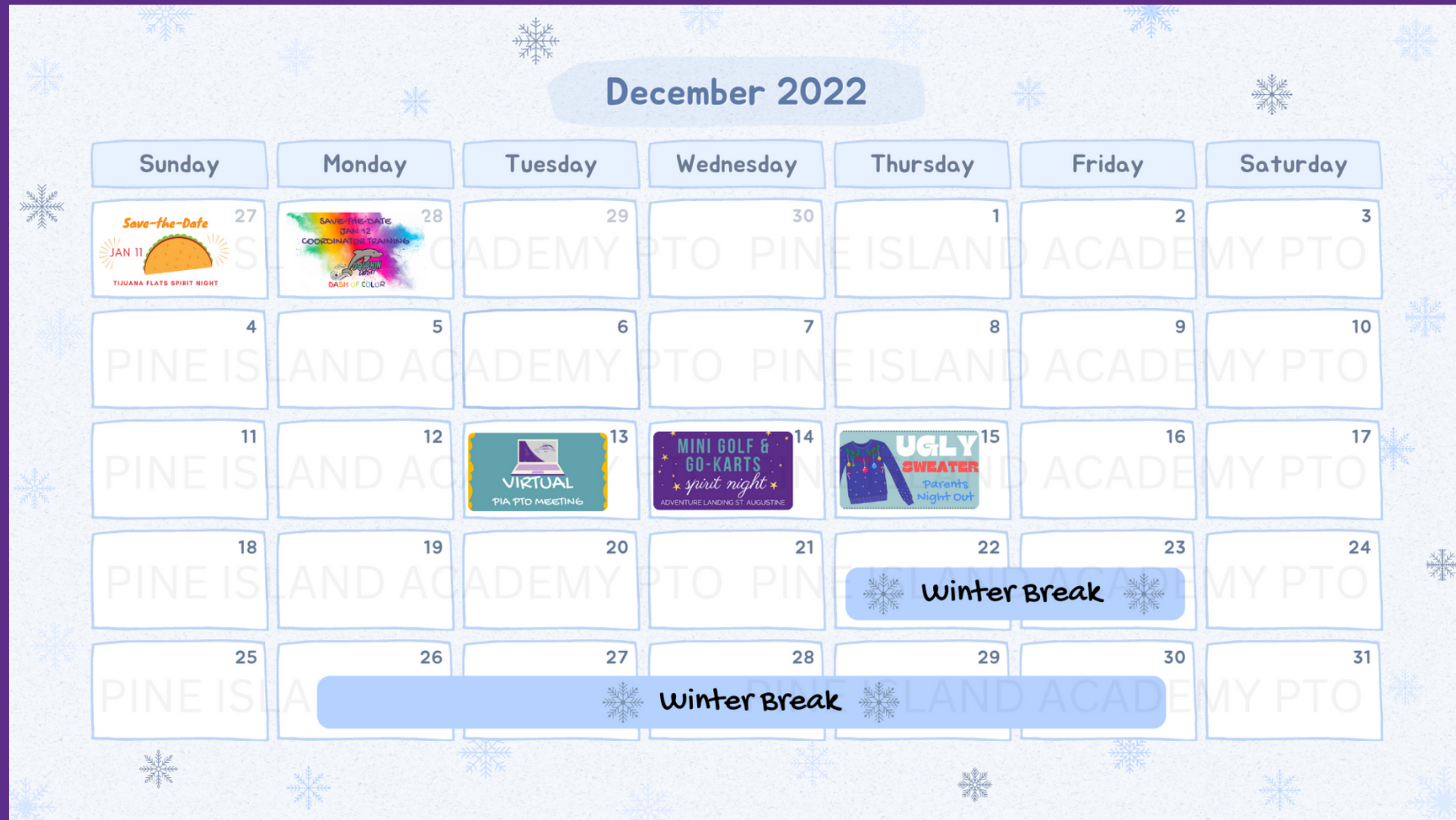
8th Grade
Planning



February
Social
2/10



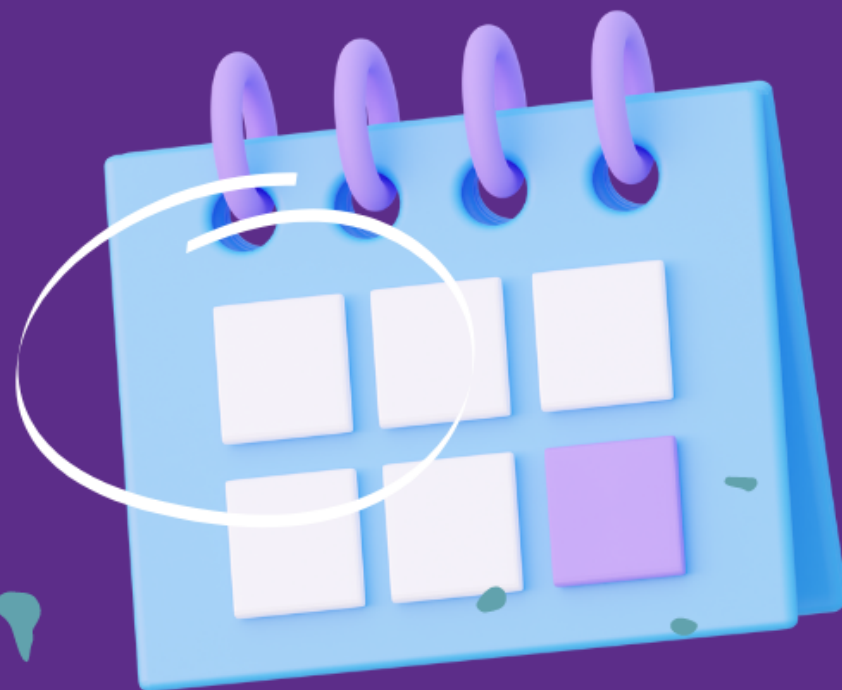
December Calendar



Next Meeting

PTO

MEETING



JAN 19 @ 8:15 AM
IN-PERSON @ PIA CAFE
VIRTUAL VIA GOOGLE MEET

SAVE THE
date



Questions, comments or concerns?